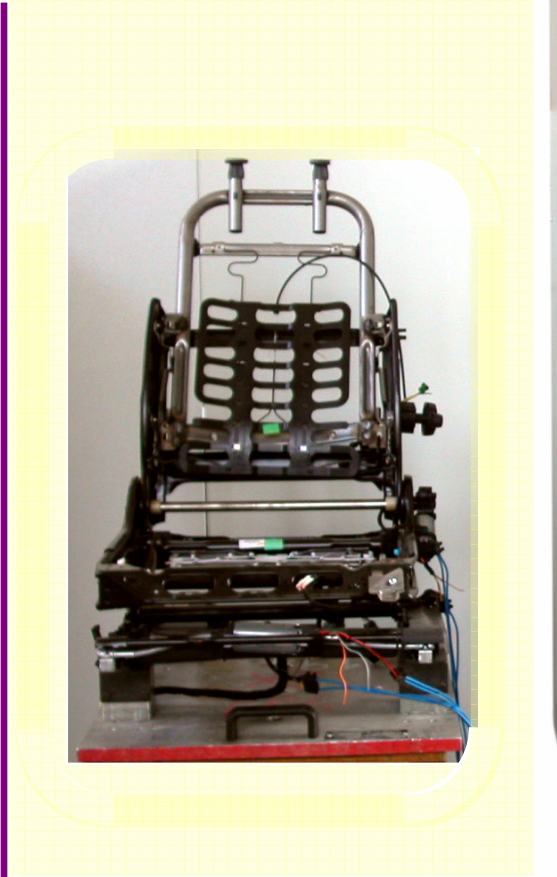
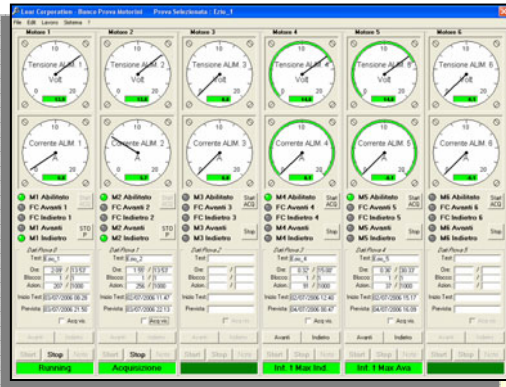


Test Bench 1873  **TESTING ELECTRIC MOTORS SEAT**

Applications

This Bench is a powerful system to test all the electric motors of a car seat; also applies to endurance test.

The system is able to simultaneously manage all the electrical motors of the car seat and collect the testing data for each one.



Up to six fully regulated and programmable linear DC Power supply can be arranged (0 ÷ 20 V, 0 ÷ High Power D40 °C as option)

The Power Supply racks, one for each motor of the seat, are controlled by the Processor Unit (P.C.).

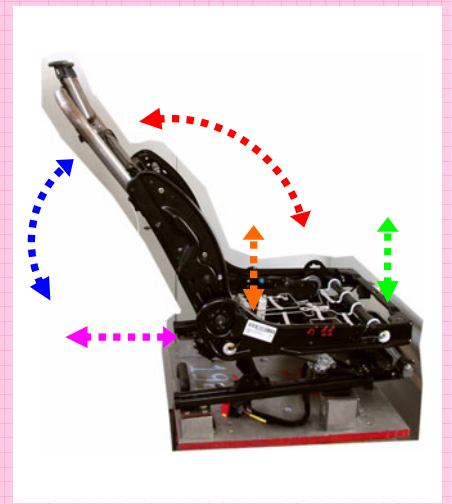
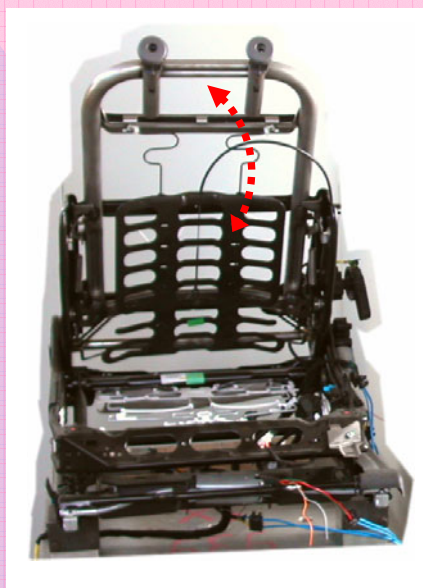
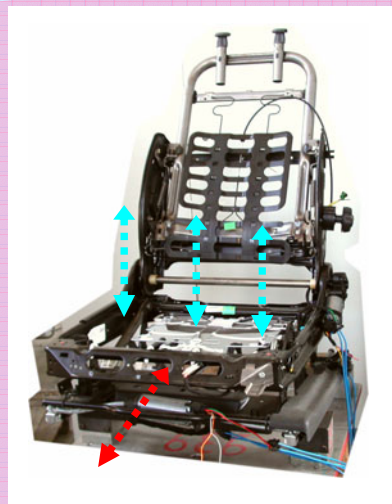


The Electronic Cabinet includes:

- PC (CPU Pentium class, TFT monitor, keyboard, mouse, printer).
- Acquisition Hardware and power supplies controls.
- Internal main electric panel
- A coupled cabinet mounting all the Power Supplies racks required.

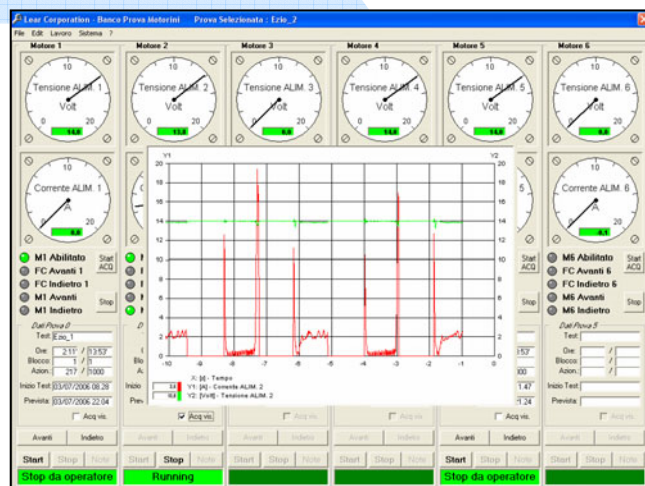


Test cycles of several steps can be programmed by the friendly user WinData Application Software.



Software **Wind-Data®**, is the application program that manages the Test Bench; it can show in real-time the Voltage applied and the Current absorption of the motors. The program is easy and fast to upgrade on board at any time, saving time.

All Tests Data are saved in the PC Hard Disk so **full test cycle is documented** and can be included in a Test Report, printed or exported as files at will.



Cec_2601_...

